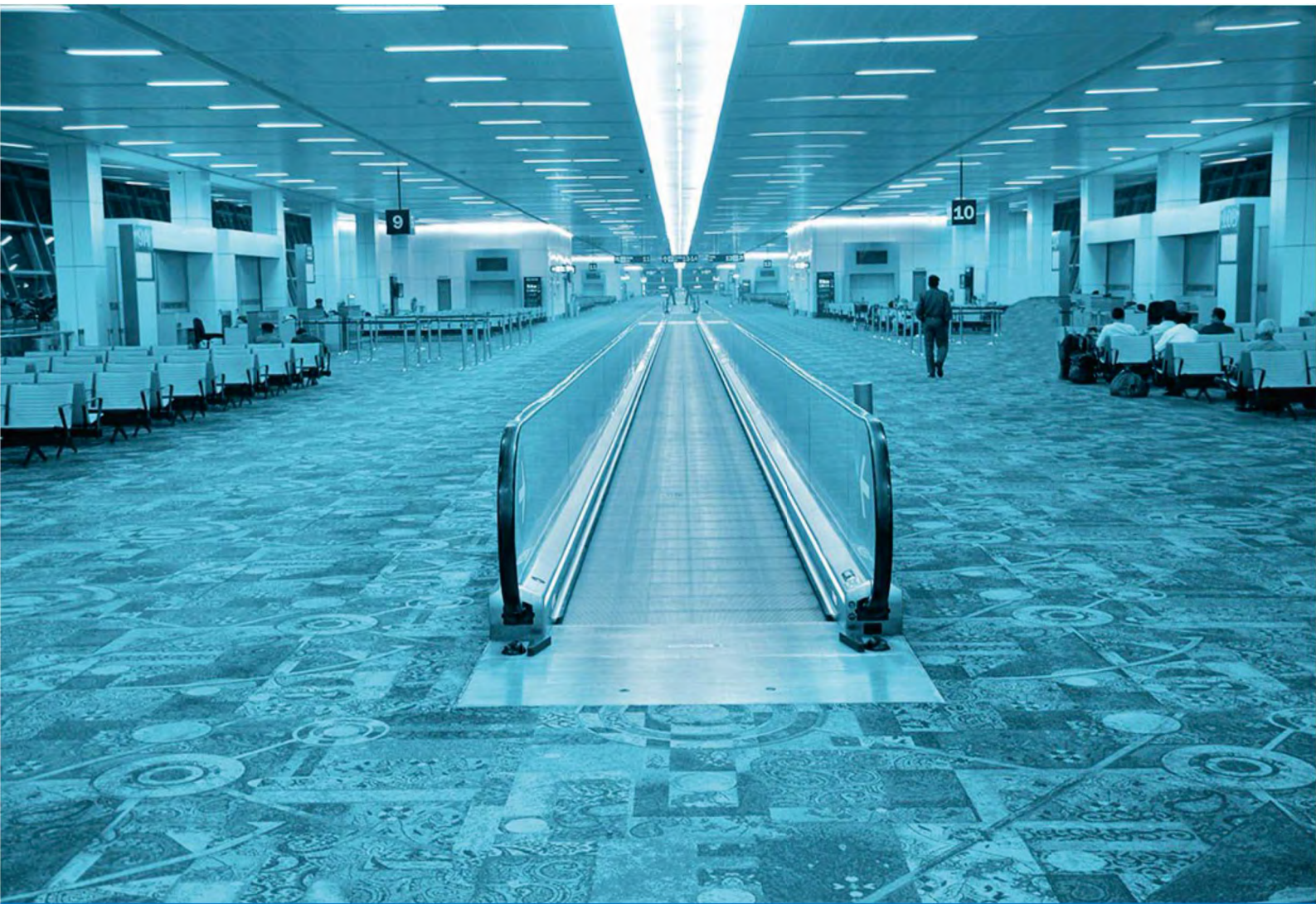


Led Lightning





Modern lighting concept

Modern and efficient lighting concept provides high-quality lighting at a lower cost. Highly versatile and of utmost reliability, Bals LED offers the solution to all your lighting needs.

Bals BLT8 Tube

Bals BLT8 Ventilated tubes are an affordable LED solution suitable for replacing traditional fluorescent tubes; they can directly replace T8 fluorescent tubes while saving over 60% in energy bills.

Areas of application



Public areas



Logistics centres



Industrial zones



Walkways



Office areas



Meeting rooms

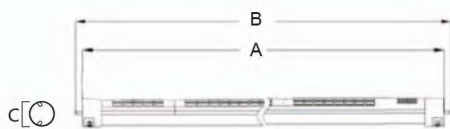
BLT8

LED Ventilated Tubes



Product Features

- System luminous efficacy exceeding 110 lm/W
- Operating reliably under ambient temperature from -20°C to +45°C
- 50000hrs lifetime (LM70)
- G13 fitting, seamlessly and effortlessly retrofitting T8 fluorescent tubes;



Product	A(mm)	B(mm)	C(mm)
10W	590.7	600	Ø28
18W	1190.7	1200	Ø28
22W	1490.7	1500	Ø28

Technical Specification

Type :	BLT 8
Power Consumption :	10 W, 18 W, 22 W
Luminous Efficacy :	110 lm / W
Colour Temperature :	3000K, 4000K, 6500K
Colour Rendering Index :	≥80
Lifetime (LM70) :	50000 hrs
Average Ambient Temperature :	25°C
Operating Temperature Range :	-20°C ~ +45°C
Input Voltage :	AC100~240V
Power Factor :	>0.9
Material :	aluminum + polycarbonates
Color :	grey
Cover :	translucent or semi-translucent
Fitting :	G13





Delivering superior quality

This LED light source has a long lifetime of more than 50,000 hours and can be well used in either low or high temperature conditions. It delivers high brightness despite its low power usage.

Bals BLD2400 LED Downlight

Bals BLD2400 LED Downlight delivers natural light with low heat output and high colour contrast. This environmentally friendly light source keeps energy consumption low and contains no mercury or other harmful substances.

Areas of application



Households



Hotels



Industrial zones



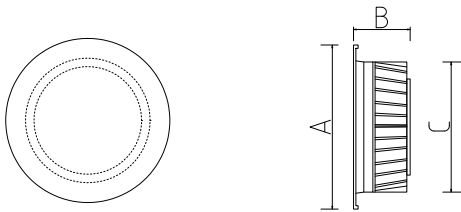
Hospitals

BLD2400

LED Downlight

Product Features

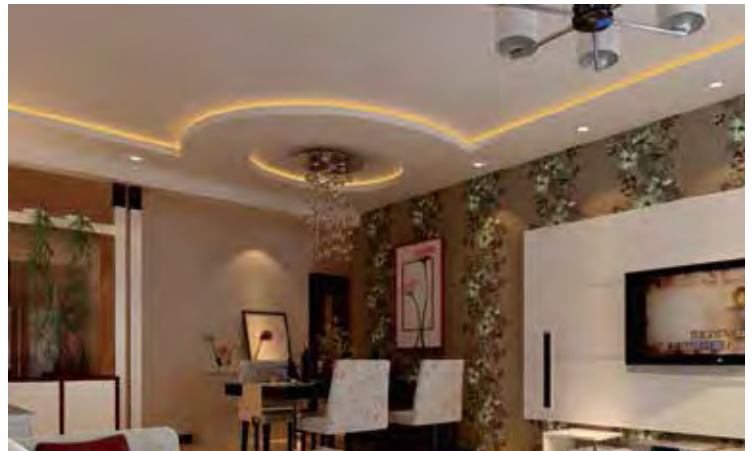
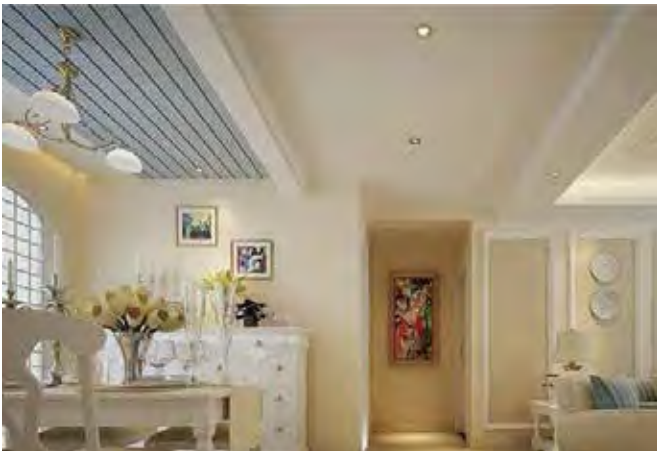
- Energy-saving: uses up to 90% less energy than traditional lighting
- Exceptionally long lifetime (LM70) of up to 50,000 hours, which is 5-10 times the lifetime of traditional fluorescent lamps
- Wide range of colour options
- High precision constant current driver



Product	A(mm)	B(mm)	C(Cut Out:mm)
3W/5W	100	45	Ø70
7W/9W/12W	148	52	Ø115
15W	180	57	Ø145
18W	195	58	Ø160

Specifications

Type:	BLD 2400
Power:	3 W 、 5 W 、 7 W 、 9 W 、 12 W 、 15 W 、 18 W
Luminous Efficacy:	100 lm/W
Color Temperature:	3000K、 4000K、 6500K
Color Rendering Index:	≥ 80
Lifetime(Lm70):	50000 hours
Average Ambient Temperature:	25℃
Input Voltage:	AC200V~240V
Operating Temperature Range:	-25℃~+45℃
Driver:	Non-dimmable(PSN)
IP Rating:	IP20
Material:	Aluminum+PMM LGP
Color:	White





Reduce Eye Strain, Create A Comfortable Working Environment

Offices are the cornerstone of every company and organization. For staff comfort needs, it is necessary to reduce eye strain to create a safer working environment for employees. High quality, warm, familiar light creates a comfortable working environment. This allows employees to relax and relieve stress, which also helps improve work efficiency.

Bals Panel Lights

Bals LED Panel Lights create soft, comfortable lighting with a full, luminous surface. The luminaire's light distribution is uniform throughout the entire surface areas, creating pleasant environments that are well lit in a soft and gentle way. They feature high efficiency and energy saving features which greatly reduce energy consumption costs.

Areas of Application



Office



Meeting Room



Hospital



Corridors

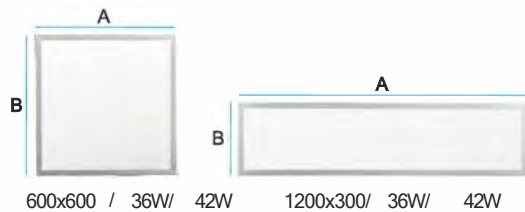


BLM2900

LED Panel Lights

Product features

- . Modular design greatly reduces maintenance casts
- . Large lighted surface with a uniform light distribution



Product	A(mm)	B(mm)	weight(kg)
600x600 / 36W/ 42W	600	600	3.9kg
1200x300/ 36W/ 42W	1200	300	4.1kg

Specifications

Type:	BLM2900
Power:	36W, 42W
Lumineus Flux:	3240 lm, 3780 lm
Lumineus Efficacy :	105 lw/W
Colour Temperature :	3000K, 4000K, 6500K
Colour Rendering Index :	>80
Lifetime :	50000 hours
Operating Temperature Range :	-20 'C - +45' C
Input Voltage :	AC220-240V
Power Factor :	>0.93
Degree of Protection :	IP20
Material:	Aluminum + PC
Installation :	Recessed/ Hook





Modern elegance

Bals LED Floodlights are highly versatile. They can be aimed in any direction, allowing creative freedom for lighting design and techniques. LED floodlights are also extremely durable and able to withstand extreme weather conditions. Their versatile nature makes them a popular choice for a diverse number of venues, such as large-scale factories, building outlines, stadiums, flyovers, monuments, parks and flower beds.

Areas of Application



Billboards



Factory Lighting



Exterior Lighting,
Architectural Lighting



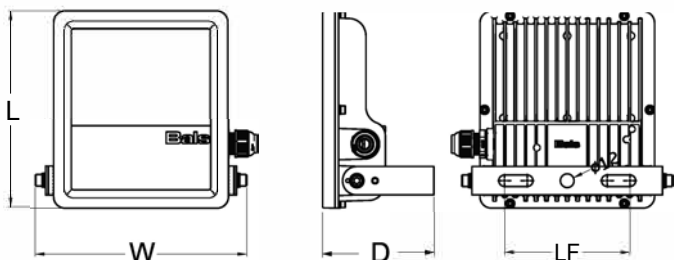
Area Lighting

BLF1920

LED Floodlight

Product Features

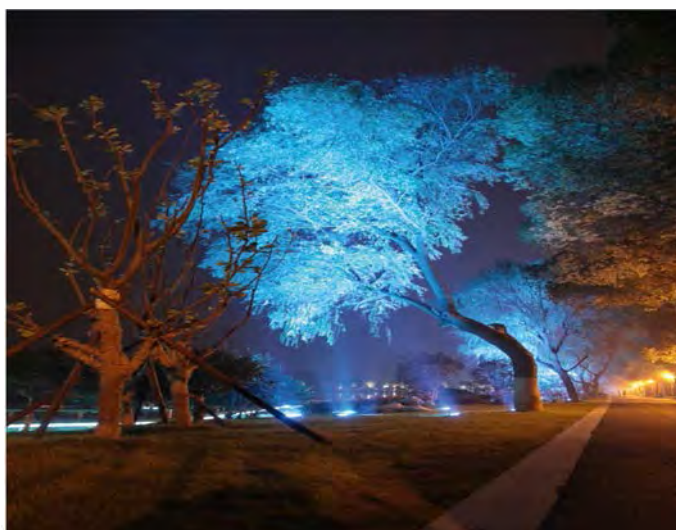
- . Bals LED Floodlights feature the latest LED technology, high efficiency and energy saving features, and 50% energy savings compared to traditional fluorescent lamps .
- . Operational lifetime: 50,000 hours, 5 times the traditional fluorescent lamp .
- . Mounting angle adjustable through 216 degrees enables multiple installation methods.



Product	L (mm)	W(mm)	D (mm)	LF (mm)
10W/20W/24W	172	185	55	90

Specifications

Type:	BLF1920
Power:	10W, 20W, 24W
Lumeneus Flux :	1000 lm, 2000 lm, 2400 lm
Lumeneus Efficacy :	100 lm/W
Colour Temperature :	3000K, 4000K, 6500K
Colour Rendering Index :	>80
Lifetime :	50000 hours
Average Ambient Temperature :	20 ' C
Operating Temperature Range :	-20 ' C - +45 ' C
Input Voltage :	AC220-240V, AC42V
Dimmer:	Non-dimmable
Power Factor :	>0.93
Degree of Protection :	Ip65
Protection Class :	Class 1
Material :	Aluminum + Tempered glass
Colour:	RAL7040
Weight:	1.3kg
Installation :	Wall mounted





Cutting Edge Technology: Ultimate Innovation

Bals LED Lights are at the forefront of cutting edge technology, utilizing dynamic innovation to develop quality products.

Bals Highbay Lights feature high efficiency and energy saving features. They are easy to install and can replace existing 300W HID while saving up to 50% on energy bills. Operational lifetime is exceptionally long at 50,000 hours and greatly reduces maintenance costs. Ra780 combined with different colour temperature options enable a bright and comfortably lit working environment.

Areas of Application



Public Areas



Logistics Centers



Industrial Zones



Harbours



Heavy Industries

BLG1600

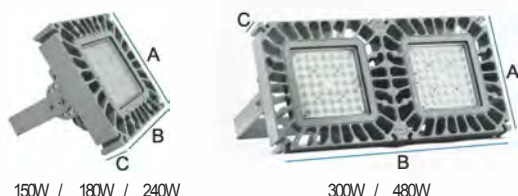
LED Highbay Lights



Product Features

- . High-strength aluminium alloy shell, tempered glass, bath impact and corrosion resistance .
- . Luminous efficacy exceeding 125lm/W, 50% energy bill savings .
- . Product installation: "U" bracket/ Hook, mounting angle adjustable, enables multiple installation methods.

. With our innovative technology and design, we obtained the patent certificate in 2015.



Product	A(mm)	B(mm)	C(mm)	weight (kg)
75W / 100W / 120W	290	580	55	6.2kg
150W / 180W / 240W	290	290	55	6.2kg
300W / 480W	290	580	55	12.5kg

Specifications

Type:	BLG1600
Power:	150W, 240W
Luminous Flux :	19500 lm, 30000 lm
Luminous Efficacy :	>125 lm/W
Colour Temperature :	3000K , 4000K , 6500K
Colour Rendering Index :	>80
Lifetime:	50000 hours
Average Ambient Temperature :	25°C
Operating Temperature Range :	-40°C-+55°C
Input Voltage :	AC176-305V
Dimme:	1-10V
Power Factor :	>0.93
Degree of Protection :	IP66
Protection Class :	Class 1
Material:	Aluminum + Tempered glass
Colour:	RAL7040
Accessories :	U type bracket
Installation :	Wall mounted / surface mounted (standard), hook (optional)





Safety. Quality. Excellence.

Robust housing made of anodized aluminum alloy, with tempered glass cover. High luminous efficiency.

Bals BLG3100 Highbay Linear Luminaire

Specially built to withstand harsh environment, the BLG2100 Highbay Linear Luminaire combines waterproof, dustproof and impact resistant features, transmitting 85% of light operated.

Areas of application

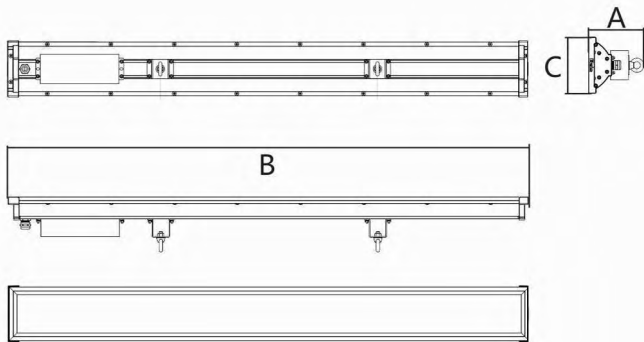


BLG3100

LED Highbay Linear Luminaire

Product Features

- 50%-60% energy savings compared to traditional luminaries
- Unibody aluminum housing of high resistance to water, dust and shock
- Anti-corrosion fasteners made of stainless steel
- Borosilicate glass cover



Product	A(mm)	B(mm)	C(mm)
75W	127	618	130
100W	127	908	130
150W	127	1199	130
200W	127	1490	130

Technical Specification

Type :	BLG 3100
Power Consumption :	75 W 、 100 W 、 150 W 、 200 W
Luminous Efficacy :	>100 lm / W
Colour Temperature :	3000K、 4000K、 6500K
Colour Rendering Index :	≥80
Lifetime (LM70) :	50000hrs
Average Ambient Temperature :	25°C
Operating Temperature Range :	-40°C~+55°C
Input Voltage :	AC200~240V
Dimmer :	1~10V
Power Factor :	≥0.93
Material :	aluminum + borosilicate glass
Mounting Type :	ceiling mount
Insulation Rating :	Class I
IP Rating :	IP65





Safety. Quality. Excellence.

For manufacturing facilities, LED lights are perfectly designed to provide an optimal working environment at a fraction of the traditional energy cost.

Bals LED Waterproof Lights

Bals LED Waterproof Lights are energy efficient and feature a state-of-the-art light distributing cover to provide reliable outdoor lighting. The robust housing is chemical and impact resistant, transmitting 85% of light operated. Bals LED Waterproof Lights have exceptionally long lifespan and are highly durable. They are suitable for a wide variety of areas, specially built to withstand harsh environments while still producing excellent light.

Areas of Application



Public areas



Factories



Parking

Outdoor Areas

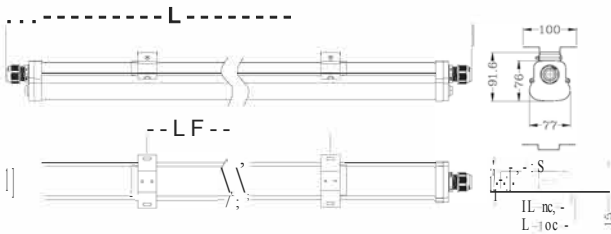
Warehouses

BSR6500

LED Waterproof Lights

Product Features

- . 50%-60% energy savings compared to traditional lighting
- . Robust housing structure combines chemical resistance and impact resistance
- . New light distributing cover, provide excellent lighting performance
- . Provide IP65 protection



Product	L (mm)	LF (mm)
600/18W	692	400
600/20W	692	400
1200/36W	1254	900
1200/40W	1254	900

Specifications

Type:	BSR6500
Power:	18W, 36W, 40W, 44W, 54W
Lumens Efficacy :	110 lm / W
Colour Temperature	3000K, 4000K, 6500K
Colour Rendering Index :	>80
Lifetime :	50000 hours

Average Ambient Temperature :	25 °C
Operating Temperature Range :	-20 °C - +45 °C
Input Voltage :	AC200-240V, AC100-130v
Power Factor :	>0.93
Material:	PC+NYLON Grey
Colour:	Surface mounted
Installation :	M20
Cable Entry :	





Natural Light Provides Safer Roads

Street safety requires bright, uniform light that maximizes safety by illuminating all road twists and turns, highlighting obstacles and pedestrians and preventing accidents. LED has outstanding light performance, illuminating your streets with bright, even lighting and increasing road safety.

Bals LED Streetlights

Bals LED Streetlights offer energy-saving benefits and excellent lighting performance. They feature built-in optics lens for even distribution of light. A high CRI and Colour temperature makes them suitable for a wide range of road applications.

Areas of Application



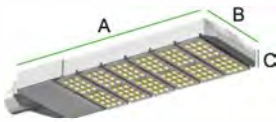
BLH1200

LED Streetlights



Product features

- . 50%-60% energy savings compared to traditional HID streetlights
- . Different optic options provide excellent, tailored performance *for* varied road profiles
- . Reduced maintenance cost



Product	A(mm)	B(mm)	C(mm)	weight(kg)
100W	473	304	128	4.94kg
150W	568	304	128	5.86kg
200W	660	304	128	6.79kg

Specifications

Type:	BLH1200
Power:	100W, 150W, 200W
Lumeneus Flux :	12000 lm, 18000 lm. 24000 lm
Lumeneus Efficacy :	120lm/W
Colour Temperature :	3000K, 4000K. 6500K
Colour Rendering Index :	>80
Lifetime:	50000 hours
Operating temperature range :	-30 'C - +45 ' C
Input Voltage :	AC200-240V
Power Factor :	>0.92
Optic:	75° x155°
Degree of Protection :	IP65
Protection Class :	CLASS 1
Material:	Aluminum + PC
Colour:	Silver
Accessories :	Adapter
Installation :	Post-top



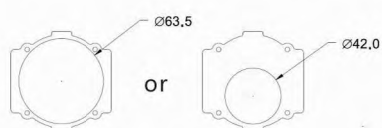
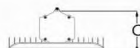
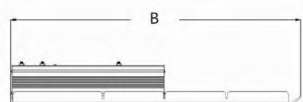
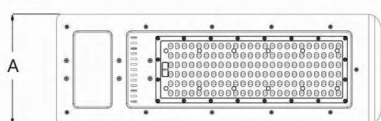
BLH1201

LED Streetlight



Product Features

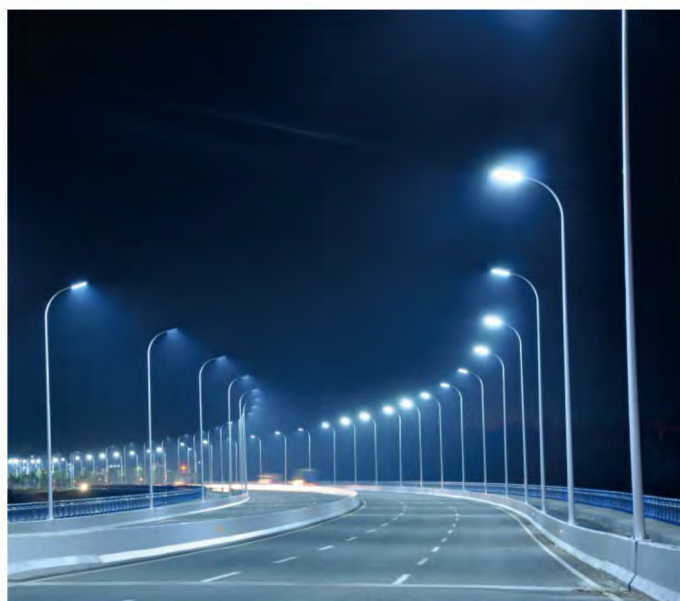
- 50%-60% energy savings compared to traditional HID streetlights
- Multiple beam angle options matching varied road profiles
- Reduced maintenance cost



Technical Specification

Type :	BLH 1201
Power Consumption :	30 W, 60 W, 90 W, 120 W, 150 W
Luminous Efficacy :	100 lm / W
Colour Temperature :	3000K, 4000K, 6500K
Colour Rendering Index :	≥80
Lifetime (LM70) :	50000 hrs
Average Ambient Temperature :	25°C
Operating Temperature Range :	-30°C~+55°C
Input Voltage :	AC200~240V
Power Factor :	≥0.92
Material :	aluminum + polycarbonates
Color :	silver
Mounting Type :	pole mount
Standard Beam Angle :	75°x155°(Other options available)
Insulation Rating :	Class I
IP Rating :	IP65

Product	A(mm)	B(mm)	C(mm)
30W	135	365.8	84.4
60W	160	431.3	89.3
90W	160	431.3	89.3
120W	215	631.7	89.8
150W	215	631.7	89.8

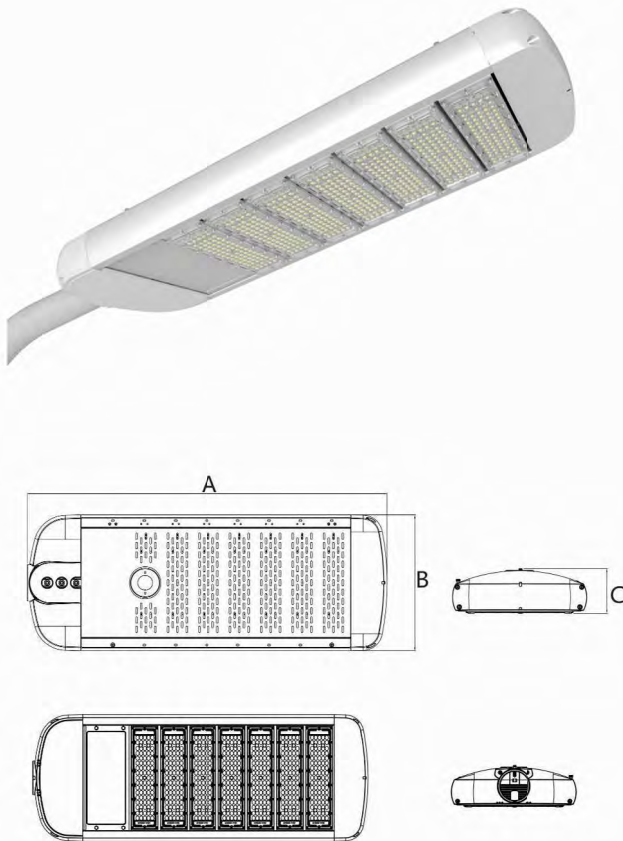


BLH1202

LED Streetlight

Product Features

- 50%-60% energy savings compared to traditional HID streetlights
- Lighter and cheaper, thanks to the sleek-and-rounded, streamlined design
- Modular design that's easy to replace, assemble and maintain; modules are compatible with those used in our floodlights and tunnel lights series
- The curved openwork top cap is optimized for heat dissipation
- Integrated light sensor available



Product	A(mm)	B(mm)	C(mm)
30W	417	330	109
60W	493	330	109
90W	569	330	109
120W	645	330	109
150W	721	330	109
180W	797	330	109
200W	873	330	109

Technical Specification

Type :	BLH 1202
Power Consumption :	30 W, 60 W, 90 W, 120 W, 150 W, 180 W, 200 W
Luminous Efficacy :	120 lm / W
Colour Temperature :	3000K, 4000K, 6500K
Colour Rendering Index :	≥80
Lifetime (LM70) :	50000 hrs
Average Ambient Temperature :	25°C
Operating Temperature Range :	-30°C~+55°C
Input Voltage :	AC200~240V
Power Factor :	≥0.92
Material :	aluminum + polycarbonates
Color :	silver
Mounting Type :	pole mount
Standard Beam Angle :	75°x155°(Other options available)
Insulation Rating :	Class I
IP Rating :	IP65



